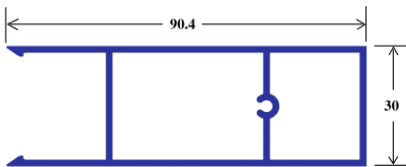




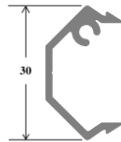
Lame Clipsable

Descriptif :

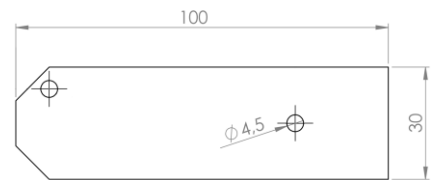
- **Fixation** de la lame par **clipsage** sur son support
- **Support** permettant de positionner la lame **horizontalement** ou à **45°**.
- Disponible en longueur **100mm** et **150mm** (lame + support).



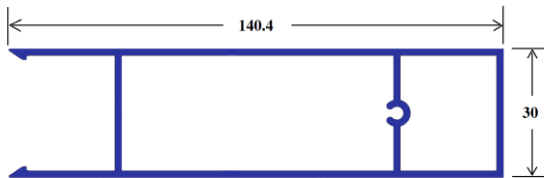
Profil Lame 100



Support Lame



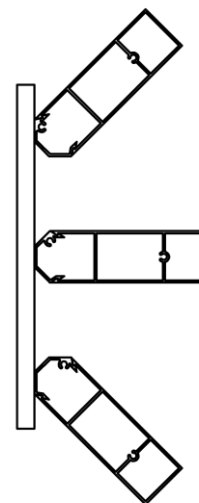
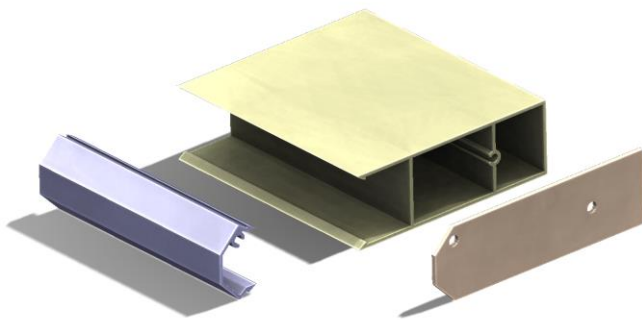
Bouchon 100(lame + support)



Profil Lame 150



Bouchon 150(lame + support)



Orientations possibles de la lame

Observations :

- Laquage RAL à la demande